

AGRI CENTURIATI

AN INTERNATIONAL JOURNAL OF LANDSCAPE ARCHAEOLOGY

Direttore
GUIDO ROSADA

Codirettore
PIER LUIGI DALL'AGLIO

Comitato scientifico
GIORGIO AMADEI (Italia) · ENRIQUE ARIÑO (Spagna)
JOSÉ BALLESTER (Spagna) · GRAEME BARKER (Inghilterra)
OSCAR BELVEDERE (Italia) · JESPER CARLSEN (Danimarca)
GÉRARD CHOUQUER (Francia) · MONIQUE CLAVEL LÉVÊQUE (Francia)
M. FRANÇOIS FAVORY (Francia) · HARTMUT GALSTERER (Germania)
ROBERT MATIJAŠIĆ (Croazia) · DAVID MATTINGLY (Inghilterra)
GIANFRANCO PACI (Italia) · MARINELLA PASQUINUCCI (Italia)
PAOLO SOMMELLA (Italia) · GIOVANNI UGGERI (Italia)
DOMENICO VERA (Italia) · UMBERTO VINCENTI (Italia)

Segreteria di redazione
CHIARA D'INCÀ
con la collaborazione di
JACOPO TURCHETTO

★

«Agri Centuriati» is an International Peer-Reviewed Journal.
The eContent is Archived with *Clockss* and *Portico*.

★

In copertina: G. MORI, *Parma 2186 anni di storia*, Parma, 2003, p. 13.

AGRI CENTURIATI

AN INTERNATIONAL JOURNAL OF LANDSCAPE ARCHAEOLOGY

6 · 2009

SISTEMI CENTURIALI E OPERE DI ASSETTO AGRARIO
TRA ETÀ ROMANA E PRIMO MEDIOEVO

ATTI DEL CONVEGNO

BORGORICCO (PADOVA) - LUGO (RAVENNA), 10-12 SETTEMBRE 2009

I



PISA · ROMA
FABRIZIO SERRA EDITORE
MMX

Amministrazione e abbonamenti
FABRIZIO SERRA EDITORE®
Casella postale n. 1, succursale n. 8, I 56123 Pisa,
tel. +39 050 542332, fax +39 050 574888

I prezzi ufficiali di abbonamento cartaceo e/o Online sono consultabili
presso il sito Internet della casa editrice www.libraweb.net.
Print and/or Online official subscription rates are available at Publisher's website www.libraweb.net.

I pagamenti possono essere effettuati tramite versamento su c.c.p. n. 17154550
o tramite carta di credito (*American Express, Visa, Eurocard, Mastercard*)

★

Uffici di Pisa: Via Santa Bibbiana 28, I 56127 Pisa,
tel. +39 050 542332, fax +39 050 574888, fse@libraweb.net
Uffici di Roma: Via Carlo Emanuele I, I 00185 Roma,
tel. + 39 06 70493456, fax + 39 06 70476605, fse.roma@libraweb.net

★

Autorizzazione del Tribunale di Pisa n. 22 del 15-IX-2004
Direttore responsabile: FABRIZIO SERRA

Sono rigorosamente vietati la riproduzione, la traduzione, l'adattamento, anche parziale o per estratti, per qualsiasi uso e con qualsiasi mezzo effettuati, compresi la copia fotostatica, il microfilm, la memorizzazione elettronica, ecc., senza la preventiva autorizzazione scritta della *Fabrizio Serra editore®*, Pisa · Roma. Ogni abuso sarà perseguito a norma di legge.

★

Proprietà riservata · All rights reserved
© Copyright 2010 by *Fabrizio Serra editore®*, Pisa · Roma.

Stampato in Italia · Printed in Italy

www.libraweb.net

ISSN 1724-904X
ISSN ELETTRONICO 1825-1277
ISBN 978-88-6227-405-0 (BROSSURA)
ISBN 978-88-6227-406-7 (RILEGATO)



UNIVERSITÀ
DEGLI STUDI
DI PADOVA

ALMA MATER STUDIORUM
UNIVERSITÀ DI BOLOGNA



Centro interuniversitario di Studi sulla centuriazione "Nereo Alfieri-Luciano Bosio"

SISTEMI CENTURIALI
E OPERE DI ASSETTO AGRARIO
TRA ETÀ ROMANA E PRIMO MEDIOEVO
ASPETTI METODOLOGICI, RICOSTRUTTIVI E INTERPRETATIVI

THE APPLICATION OF CENTURIAL SYSTEMS
AND METHODS OF AGRARIAN ORGANISATION
FROM THE ROMAN PERIOD TO
THE EARLY MIDDLE AGES

BORGORICCO (PADOVA) - LUGO (RAVENNA)
10TH-12TH SEPTEMBER 2009

I

A cura di/Edited by
PIER LUIGI DALL'AGLIO · GUIDO ROSADA



CHÉC, Centre d'Histoire «Espaces et Cultures»,
Université Blaise Pascal, Clermont-Ferrand II



REGIONE DEL VENETO



Comune di Borgoricco



Comune di Lugo



FONDAZIONE
CASSA DI RISPARMIO
E BANCA DEL MONTE
DI LUGO



Fondazione Flaminia di Ravenna

SIA, Società Italiana
di Archeoastronomia



Comitato Scientifico / Scientific Committee

ENRIQUE ARIÑO GIL, *Dep. de Prehistoria, Historia Antigua y Arqueología, Universidad de Salamanca / Department of Prehistory, Ancient History and Archaeology, University of Salamanca* · BRIAN CAMPBELL, *School of History and Anthropology, Queen's University, Belfast* · PIER LUIGI DALL'AGLIO, *Dipartimento di Archeologia, Università di Bologna / Department of Archaeology, University of Bologna* · PHILIPPE LEVEAU, *Université de Provence, Aix-Marseille I* · GUIDO ROSADA, *Dipartimento di Archeologia, Università di Padova / Department of Archaeology, University of Padua* · GIOVANNI UGGERI, *Dipartimento di Scienze dell'Antichità, Università «La Sapienza», Roma / Department of Antiquarian Sciences, University of Rome «La Sapienza»* · ELISABETH ZADORA-RIO, *CNRS-UMR 6173 CITERES-Centre Interdisciplinaire Cités, TERritoires, Environnement et Sociétés, Tours*

Comitato Organizzativo / Organising Committee

PIER LUIGI DALL'AGLIO, *Dipartimento di Archeologia, Università di Bologna / Department of Archaeology, University of Bologna* · GUIDO ROSADA, *Dipartimento di Archeologia, Università di Padova / Department of Archaeology, University of Padua* · CARLOTTA FRANCESCHELLI, *CHÉC, Centre d'Histoire «Espaces et Cultures», Université Blaise Pascal, Clermont-Ferrand II* · ENRICO GIORGI, *Dipartimento di Archeologia, Università di Bologna / Department of Archaeology, University of Bologna* · MARIA TERESA LACHIN, *Dipartimento di Archeologia, Università di Padova / Department of Archaeology, University of Padua* · ANTONIO MARCHIORI, *Dipartimento di Archeologia, Università di Padova / Department of Archaeology, University of Padua*

Segreteria di Redazione per gli Atti / Secretaries for Conference Proceedings

CHIARA D'INCÀ · ENRICO GIORGI · JACOPO TURCHETTO

Segreteria Organizzativa / Secretary for Conference Organisation

DAIANA TERMINI

Segreteria Amministrativa / Secretariat for Administration

FONDAZIONE FLAMINIA, Ravenna

SOMMARIO

GUIDO ROSADA, PIER LUIGI DALL'AGLIO, <i>Sistemi centuriali e opere di assetto agrario tra età romana e primo Medioevo</i>	11
GUIDO ROSADA, PIER LUIGI DALL'AGLIO, <i>The application of centurial systems and methods of agrarian organisation from the Roman period to the Early Middle Ages</i>	15

ATTI DEL CONVEGNO

SISTEMI CENTURIALI E OPERE DI ASSETTO AGRARIO TRA ETÀ ROMANA E PRIMO MEDIOEVO

BORGORICCO (PADOVA) - LUGO (RAVENNA), 10-12 SETTEMBRE 2009

I.

METODI E STRUMENTI PER LA RICOSTRUZIONE DEGLI ASSETTI CENTURIALI

GUIDO ROSADA, <i>Eius regiones, limites, confinia/determinabo: ei rei ego sum factus finitor (Plaut., Poen., 48 sg.)</i>	21
MARIA TERESA LACHIN, <i>Una storia della terra: leggere il paesaggio agrario a nord-est di Padova</i>	39
ROBIN BRIGAND, <i>Une lecture sous SIG des formes parcellaires rurales et urbaines de la plaine centrale de Venise</i>	53
ANTONIO MARCHIORI, <i>Centuriazioni d'Istria: studio evolutivo delle disuguaglianze</i>	71
SIMONETTA MENCHELLI, <i>Per la centuriazione dell'ager Firmanus: analisi integrata di fonti tipologicamente diverse</i>	99
CRISTINA MENGOTTI, <i>Una nuova proposta per l'interpretazione delle divisioni interne della centuriazione di Florentia</i>	115
GIUSEPPE CERAUDO, VERONICA FERRARI, <i>Fonti tradizionali e nuove metodologie d'indagine per la ricostruzione della centuriazione attribuita all'ager Aecanus nel Tavoliere di Puglia</i>	125
ALAIN CHARTRAIN, <i>Da Lattara a Montpellier: una prima archeologia del territorio centuriato. Età romana, età del Ferro</i>	143
JOHN PETERSON, <i>Development of calculations and concepts in the context of South Norfolk A over 20 years</i>	159
HÈCTOR ALEIX ORENGO, JOSEP MARIA PALET MARTÍNEZ, <i>Methodological insights into the study of centuriated field systems: a landscape archaeology perspective</i>	171

ASPETTI GIURIDICI E TESTUALI

BRIAN CAMPBELL, <i>River definitions in Roman technical literature</i>	189
GUALTIERO CALBOLI, LIBERA ALEXANDRATOS, <i>I confini nei testi degli agrimensori. Considerazioni generali</i>	195

MAURO DE NARDIS, <i>L'ager quaestorius di Cures Sabini e lo sviluppo della centuriazione romana</i>	207
ELENA TASSI SCANDONE, <i>Loca communalia e terrae ius Etruriae. Strutture agrarie etrusche e centuriazione romana</i>	217
LAURETTA MAGANZANI, <i>Agri publici vectigalibus subiecti: organizzazione territoriale, regime giuridico</i>	227
LUIGI CAPOGROSSI COLOGNESI, <i>Il diritto delle XII Tavole e l'inizio della centuriatio</i>	241
UMBERTO VINCENTI, <i>Esclusione o inclusione? Riflessioni a partire dagli agri divisi vel adsignati</i>	253
MASSIMILIANO VINCI, <i>La responsabilità dell'agrimensore tra fonti giuridiche e testimonianze gromatiche</i>	257
CENTURIAZIONE E MODIFICAZIONI AMBIENTALI	
PIER LUIGI DALL'AGLIO, <i>Centuriazione e geografia fisica</i>	279
PAOLO CAMPAGNOLI, ENRICO GIORGI, <i>Centuriazione ed assetti agrari nelle valli marchigiane. Il rapporto tra persistenza e idrografia</i>	299
MARCO MARCHESINI, SILVIA MARVELLI, <i>Ricostruzione del paesaggio vegetale e antropico nelle aree centuriate dell'Emilia Romagna attraverso le indagini archeobotaniche</i>	313
PAOLO CAMERIERI, ANDREA DE SANTIS, TOMMASO MATTIOLI, <i>La limitatio dell'ager Reatinus. Paradigma del rapporto tra agrimensura e pastorizia, viabilità e assetto idrogeologico del territorio</i>	325

METHODOLOGICAL INSIGHTS INTO THE STUDY OF CENTURIATED FIELD SYSTEMS: A LANDSCAPE ARCHAEOLOGY PERSPECTIVE

HÈCTOR ALEIX ORENGO · JOSEP MARIA PALET MARTÍNEZ*

The morphological identification of centuriated field systems has been characterised from its beginning by methodological approaches mainly sustained on *actus*-based modular relationships and orientations. Many researchers dedicated to the identification of centuriations have only performed archaeomorphological analyses based on interpretation of aerial photographs and maps without field verification or any other proof of the validity of their hypothesis. Their restitutions consisted of a set of lines over a map or an aerial photograph which often lacked precision and spatial resolution.

This article argues that the study of centuriations should transform its aims, scope and methodologies to be converged with those presented by diachronic trans-disciplinary landscape archaeology. In order to do so a series of integrated methodological approaches are exposed and their applicability discussed.

INTRODUCTION

LEAVING apart the well preserved examples of Italy and Northern Africa, the archaeological analysis of centuriations has been centred on the identification of the traces present in the modern landscape whose morphological origin can be dated back to Roman times. In this sense, the morphological identification of centuriated field systems has been greeted with scepticism by much of the archaeological community and it has also received criticism from within their own discipline.¹ The lack of a consistent methodological approach which could confidently identify centuriated traces has probably been the main reason.

It is argued in this article that the sole morphological identification of centuriated field systems is an incomplete procedure which can lead to a continued dismissal of the discipline. In this sense, a landscape archaeology perspective becomes very useful in order to study centuriated landscapes from a diachronic approach. The study of landscape dynamics can add a necessary chronological depth which will allow to distinguish Roman traces from those previous or later in time.²

Landscape archaeology will also provide the necessary methods and techniques to identify traces with high precision even in the cases where they may not be visible to the naked eye. Lastly, to adopt a landscape archaeology perspective will grant the necessary theoretical background to interpret centuriated field systems not only through materialistic and economical factors but also by ecological and symbolic ones.

During the 1980s, the Besançon Group (University of Franche-Comté, France) developed a series of techniques aimed at identifying centuriated grid systems by their ori-

* Landscape Archaeology Research Group, Catalan Institute of Classical Archaeology, Plaça Rovellat s/n. 43003 Tarragona (Spain); horengo@icac.net, jpalet@icac.net.

¹ FICHES 1996; FAVORY 1997; CHOUQUER 2000; LEVEAU 2000.

² LEVEAU 2006.

entation and by the proportions of *centuriae* with modules based on multiples of the Roman *actus*, a length normally in the range 35.0 m to 35.6 m.¹ These centuriations were identified in the modern landscape by carto- and photo-interpretation. Unfortunately, although this approach, mainly developed among French researchers, helped in identifying several centuriations in France and other Mediterranean regions, in some cases the hypotheses have been proven by archaeological evidence to be false. This failure to identify centuriated systems with certainty has sometimes resulted in the dismissal of photo-interpretation approaches and lack of confidence in the methodological approaches originally developed by the Besançon Group.²

This might be the reason why the 1990s were characterised by research that was more conscious of interpretative and chronological problems as well as of methodological approaches. This is reflected in a more careful use of the modular approach and in the development of the archaeology of field systems that analyses the archaeomorphological sequence from a long-term perspective.³ In addition, the incorporation of archaeological, historical and environmental data has been extremely useful.⁴ New techniques were also incorporated in research methods. Geographic Information Systems (GIS) have provided an increase in accuracy and reliability in the location of ancient traces.⁵

From a conceptual point of view, the study of centuriations has also experienced a significant shift. Marxist interpretations with a pronounced economic slant were preponderant throughout French research during the 1980s. Although some groups still support economic and materialistic positions,⁶ other specialists have changed their focus towards more social and ideological explanations.⁷ Nevertheless, the study of centuriated systems is still grounded on materialistic premises. Economic factors linked to the process of land division draw most researchers' attention.⁸

METHODOLOGICAL APPROACHES TO THE ARCHAEO MORPHOLOGICAL IDENTIFICATION OF CENTURIATED FIELD SYSTEMS

Archaeomorphological basis

First of all the research should focus on landscape morphological dynamics from a long-term perspective, even if the traces restored do not form part of a centuriation grid.⁹ Selected traces are often 'dominant' axes, which carry some 'morphogenetic' character. This means that they have subsisted in the landscape throughout different historical periods, beyond their date of creation, conditioning the orientation of the surrounding field systems.¹⁰ Archaeomorphological restitutions based on this approach usually present continuous lines which vertebrate the landscape, communicating traces which could have been originated in different chronological periods. In this sense, it should not be forgotten that archaeo-morphology studies the modern landscape and therefore only the traces which have kept their use through time have been preserved.

¹ CLAVEL-LÉVÊQUE 1983; CHOUQUER *et alii* 1987.

² CLAVEL-LÉVÊQUE 1993, p. 18; PETERSON 1993, p. 55, note 52; FICHES 1996; CHOUQUER 2000; ARIÑO *et alii* 2004, p. 61.

³ CHOUQUER (ed.) 1996-1997.

⁴ PALET 1997.

⁵ ROMANO, TOLBA 1996; ROMANO 1998; PETERSON (ed.) 1998a.

⁶ PRIETO 2002; ARRAYÁS 2005; GONZÁLEZ VIL- LAESCUSA 2007; PRIETO 2008.

⁷ CHOUQUER 2003a.

⁸ LEVEAU 2000.

⁹ CHOUQUER 1997; CHOUQUER 2000; CHOUQUER 2003b.

¹⁰ FAVORY 1996; FAVORY 1997.

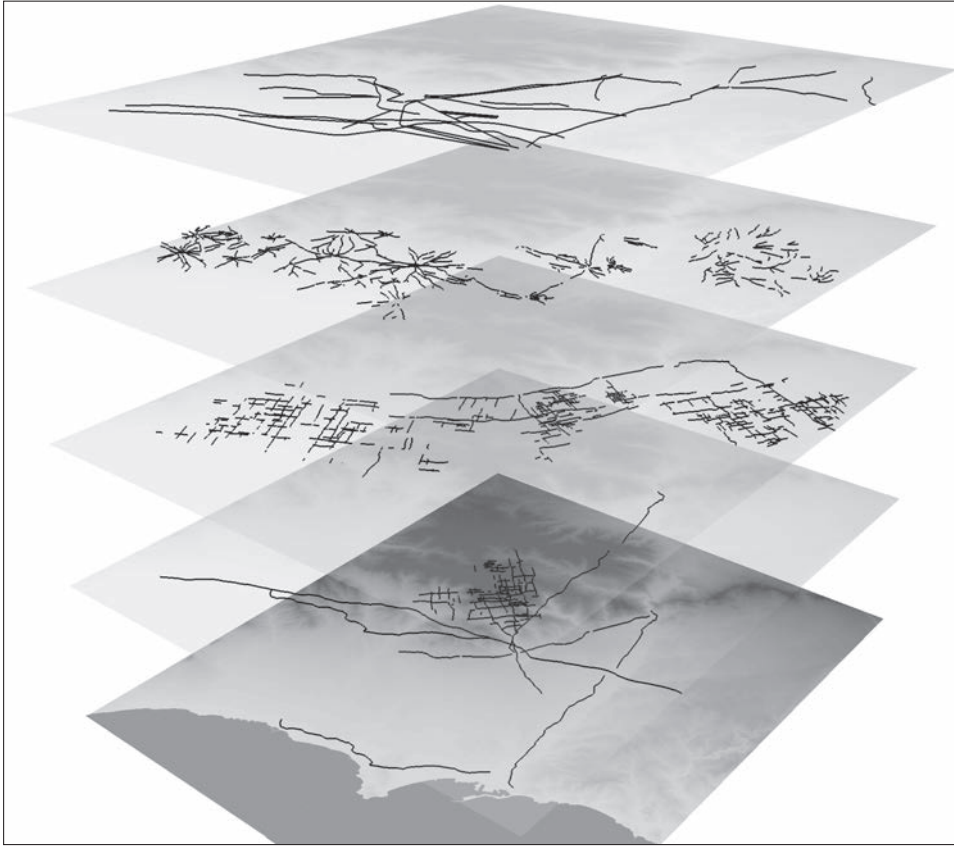


FIG. 1. An example from the *ager Tarraconensis* of diachronic GIS-based archaeomorphological analysis in which several time-ordered road-networks can be appreciated.

On the contrary, restitutions based on more traditional approaches usually present a multitude of short discontinuous lines with no morphological sense.

The importance of identifying not only centuriated, but all road networks and field systems is evidenced by the fact that it becomes possible to establish a relative chronological sequence¹ (Fig. 1). After having selected and progressively dismissed modern morphologies, the more ancient ones become increasingly evident within their coherent setting. This methodology forms the basis of regressive landscape analysis.² The chronological sequence that connects different systems can be evidenced through processes such as the 'erasure' of older systems by subsequent ones or the 'seizure' of ancient but still active traces which alter their itinerary to adapt to the new morphological system. These relationships can help to isolate a synchronous morphologic system and date it according to previous and subsequent systems.

¹ VION 1989; ARIÑO *et alii* 2004.

² ROBERTS 1987; PALET 1997, pp. 32-33.

Archaeomorphology in a GIS environment

In the last years Geographic Information Systems (GIS) have been widely incorporated in the archaeological study of landscapes. They provide a frame in which all the geographically referenced information necessary to conduct archaeomorphological research can be included and analysed in a multilayered and multiscale environment. They also provide easy and effective management of the data, excellent graphical output and, above all, high spatial accuracy.

The first step to conduct GIS-based archaeomorphological analysis is to develop a custom geo-database. All geographically referred information relevant to the morphology of the study area should be incorporated in the geo-database. It could include orthophotographs, but also different map types, cadastral information, and the location of archaeological sites. Traditionally much archaeomorphological research has been exclusively based on the analysis of aerial photographs, without correlating the results with other geographically referred data. This approach has too often ignored the fact that aerial photographs present deformations caused by the camera lens. These can be considerable at the edges of a photograph. The exclusive use of these photographs to analyse the ancient landscape morphology is an erroneous practice which can lead to faulty results. It becomes evident when this approach is applied to centuriated field systems, a discipline partially based on metrological analysis. The detection of centuriated grids as a result of such procedures should be considered as potentially unreliable.¹

In order to avoid such deformations it is necessary to orthorectify the aerial photographs and, in doing so, transform them in orthophotographs (FIG. 2). There are several methods and programs that perform different orthorectification procedures. In general, it is necessary to incorporate information relative to the camera (focal length, principal point, resolution, lens distortion, fiducial marks coordinates etc.), many ground control points (GCP) that appear in the photograph and whose exact geographic location is known, and a high definition digital terrain model of the area covered by the photographs. Depending on the scale and quality of the photograph, it is possible to obtain RMSE values under 5 m.

The incorporation of maps also requires certain treatment, depending on the map quality (precision, scale etc.), its projection and geographic parameters: it would only need a reprojection or a geographic transformation and a couple of GCPs to be correctly georeferenced (FIG. 3).

Digital data, mainly provided by public agencies, on the contrary, generally include the necessary geographic parameters for the GIS to automatically include them, thus saving much time and preventing potential mistakes. In this respect, the spread of web map services (WMS) has provided an easy tool for the incorporation of reliable geographic information which can improve the quality of GIS-based archaeomorphological restitutions.

Another element which can be considered of interest is the digital terrain model (DTM). Digital terrain models can be employed in performing GIS-based topographic analysis, such as the modelling of least cost routes, viewshed analyses, flood or erosion modelling etc. These can be useful in studying the genesis, development and taphonomic processes of the study area morphology. There has been some discussion on the

¹ Examples can be found in OLESTI 1995; ARRAYÁS 2005; DECRAMER *et alii* 2006; GONZÁLEZ VILLAES-CUSA 2007.

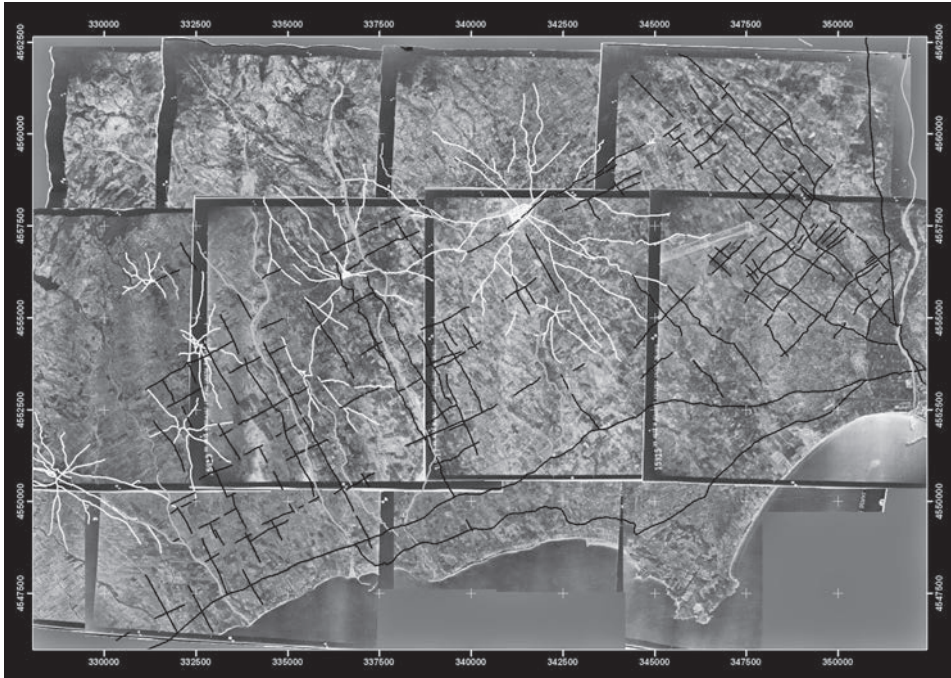


FIG. 2. An example from the *ager Tarraconensis* of archaeomorphological restitution on orthorectified aerial photographs.
Note the deformations present at the corners of the photographs.

characteristics a DTM should match in order to be applicable to archaeological analysis. Mainly, it should have enough spatial definition to reflect the smallest type of features which could influence the study area morphology. In the case of Mediterranean alluvial plains it is recommended a definition of 5×5 m/cell which would reflect ravines and other morphogenetic features influencing the study area morphology. Another issue is the appropriateness of employing DTMs developed from modern topographies to analyse archaeological landscapes. The severe landscape change occurred during the XXth century justifies such apprehensions. In order to compensate this change some methods can be employed such as the development of models from old aerial stereopairs¹ (FIG. 4) or digitising ancient detailed topographic maps.²

Once the geographic database is developed and all the elements classified by types and dates, GIS-based archaeomorphological analysis can be performed. In order to do so the most straightforward approach is the creation of a polyline vector layer in which the result of the archaeomorphological analysis will be stored. In this respect, GIS vector layers can be linked to a database. This feature is extremely useful in the restitution of traces because it allows the integration of data relative to the source employed in the restitution, such as its reliability or its date. It is also possible to include information about the trace, such as its orientation, depth, associated features, proposed chronology etc.

¹ ORENGO, EJARQUE, ALBIACH 2010.

² MIRÓ, ORENGO 2010.

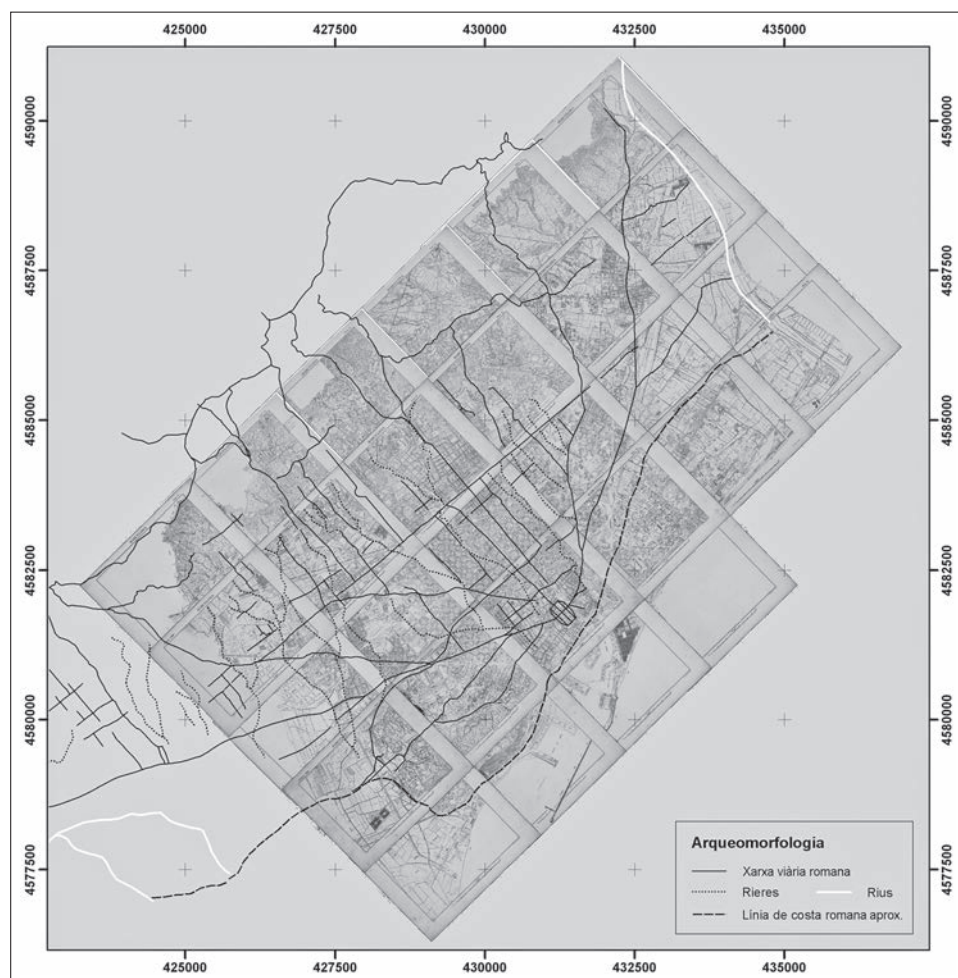


FIG. 3. An example from the *ager Barcinonensis* of archaeomorphological restitution on georeferenced old maps.

Other archaeomorphological analysis

Geophysical survey has been very much applied to locate subsurface structures. Leaving aside the discussion about which technique may be more appropriate in the different environmental settings, its efficiency in this respect has been repeatedly proven. The application of these techniques within archaeology has been mainly directed towards the location of archaeological structures. Taking into account the spatial scale of landscape macrostructures, geophysical survey can provide a much needed tool in the location of buried roads and field boundaries.

During the last years the analysis of multispectral images (from satellite or aerial platforms) has been incorporated in the archaeomorphological research.¹ These images

¹ DONOGHUE *et alii* 2006; ORENGO, EJARQUE, ALBIACH 2010; ORENGO, PALET 2008.

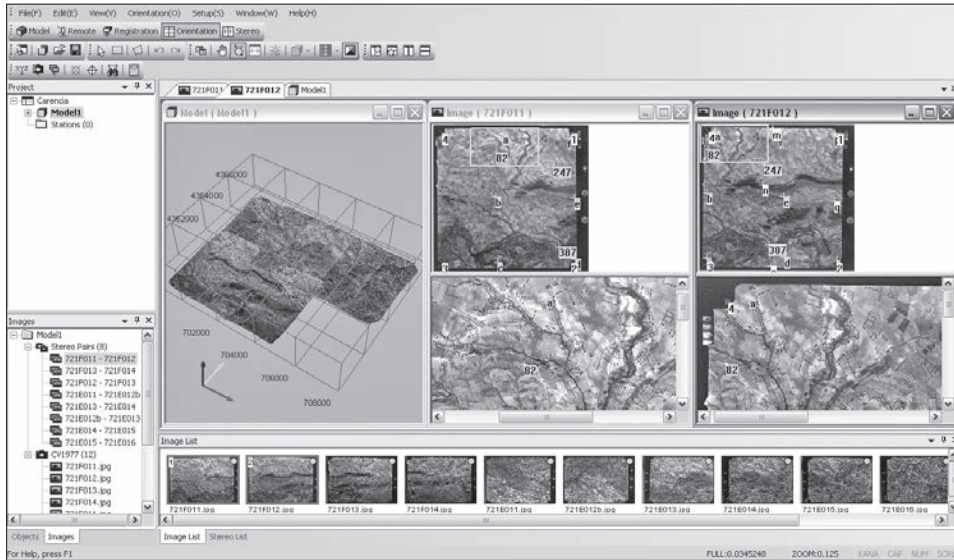


FIG. 4. An example of the creation of a DTM from aerial stereopairs.

can locate traces which are otherwise not detectable in the visible range of the electromagnetic spectrum (FIG. 5). Each band can be treated or even filtered to improve its contrast and the visibility of the traces.

Despite their spatial scale has not allowed their direct archaeological use, radar images have a great potential in detecting hidden traces thanks to their ability to penetrate vegetation cover¹ and, under special conditions, soil surface.²

Microrelief detection is another technique with great applicability in the detection of archaeomorphological traits. Light Detection and Ranging (LIDAR) allows the creation of such highly defined microreliefs that it is possible to identify ancient field limits, and roads. LIDAR has already proven its utility in mapping the *ager Faliscus* road-system.³ The use of stereophotogrammetry-based microrelief detection has also proven its utility in the detection of buried roads (FIG. 6). Although much cheaper than LIDAR, these micro-



FIG. 5. Identification of centuriated lines through the filtering of a Landsat band 5 image. One of those traces can also be appreciated in a short wave infrared aerial photograph.

¹ PARCAK 2009, p. 78.

² EL-BAZ, ROBINSON, AL-SAUD 2007.

³ CIFANI, OPTIZ, STODDART 2007.

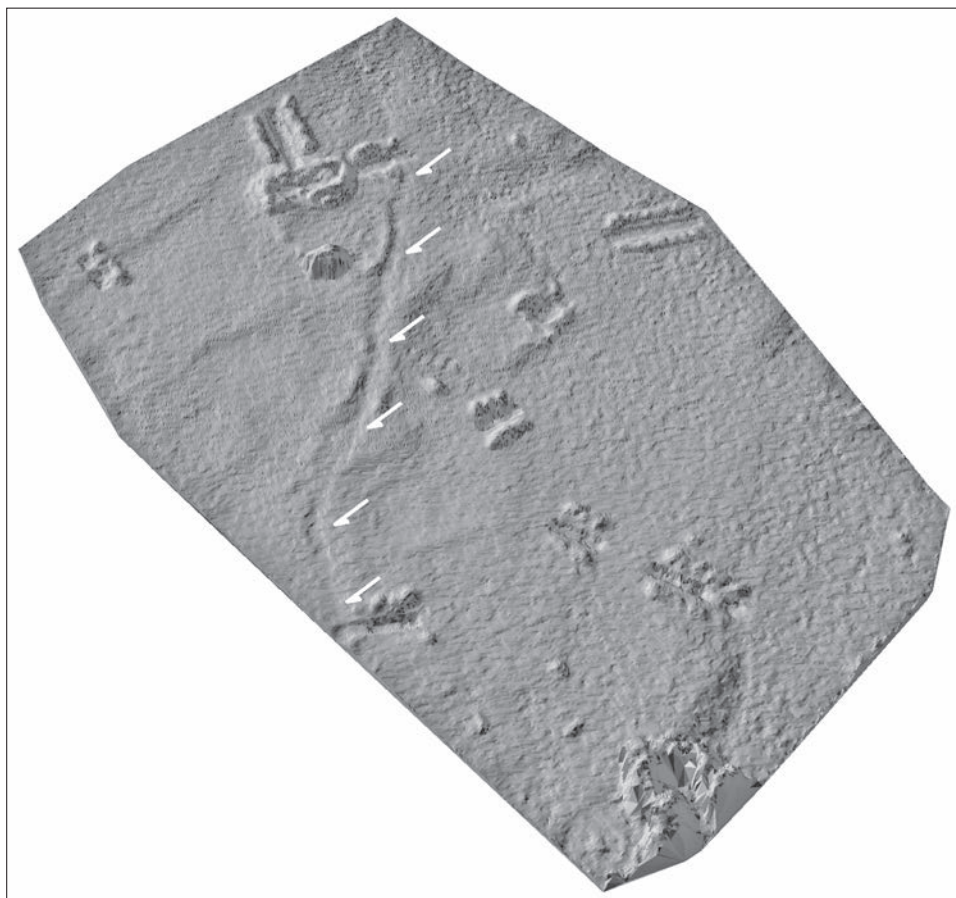


FIG. 6. Microrelief developed from kite aerial photographs in which a buried path can be clearly appreciated. Vilalta site (Targasonne, France), Olivier Passarrius (director, Pôle archéologique-Conseil Général des Pyrénées-Orientales), Carine Calastrenc (photographs, FRAMESPA-CNRS), Hèctor Orengo (photogrammetrical analysis, GIAP-ICAC).

lieves cannot be continuous or systematically applied to centuriated areas since it would imply the treatment of large amounts of data.

Another GIS-specific technique which can be applied to archaeomorphological studies is least cost route analysis (LCR) which suggests the best route given a cost surface that specifies the cost of going through the different areas of the landscape. Slope has traditionally been employed as a major indicator in the generation of cost surfaces but other factors such as rivers, bridges or wetlands can also be added to the model to increase or reduce the cost of passing through certain areas. The great multiplicity of the factors taken into account when planning the setting of a Roman road is reflected in the complexity of the cost models found in relevant archaeological literature.¹

¹ DE SILVA, PIZZILO 2001; VAN LEUSEN 2002; FIZ, ORENGO 2008.

Another topography-based analysis is viewshed analysis. It shows which parts of the landscape are visible from a specific spot. It has been specifically employed in studying the conceptual basis behind the genesis of centuriated field systems.¹

Topographic environmental analysis can also provide a good basis for explaining the area morphology and occupation. Some of these can be erosion analysis, somewhat hampered by the inherent difficulties of applying it to model past erosion, or flood analysis with some examples of its archaeological applicability already published.²

The archaeomorphological survey

A purposely designed archaeomorphological survey becomes necessary in order to evaluate the different hypotheses drawn by the archaeomorphological analysis. This survey should aim to evaluate the documented traces, their morphology and the stratigraphic relationship among them, but it should also identify all those structures and material dispersions associated to them. Some of these can be topographic markers, boundary markers, milestones, division walls, bridges but also ceramic spots or standing archaeological structures. It allows ascribing chronologies to some traces by associating them to datable structures. It is also useful in rejecting evident modern traces. Finally, it permits the establishment of relative chronological relationships among traces.

TESTING THE CENTURIATION PROPOSAL

There are several ways to test the reliability of a centuriation proposal. This article argues that, to do this, it is not sufficient to measure the distance between the axes and to observe that they are constant and a multiple of the Roman *actus*. Open area archaeological excavation constitutes the most reliable proof of the existence of a centuriation, although there are currently few examples.

The research must also take into account the sedimentary and erosive processes that modify the visibility of the archaeological record. In alluvial plains, the sedimentary covering of ancient roads and field boundaries may allow the archaeological excavation of the traces.³ Conversely, in other cases, erosion may occur (deep paths, pits etc.), greatly hindering archaeological validation. Such eroded surfaces have been documented in most centuriated landscape of the *ager Tarraconensis*, where Roman soil levels are hard to find.⁴

For this reason, alternative ways of assessing the reliability of the centuriation hypothesis have also been employed. The most common is to superimpose well known archaeological data onto the located traces in order to measure the proximity between them.⁵ Among these test data, the main relevant structures are those connected to road networks or agricultural arrangements, which form part of centuriated systems, such as milestones or funerary monuments (both directly related to roads), but also settlement or agriculture-related structures.

In this respect, researches must be cautious when using institutional archaeological site records. Many of the official sources regarding the location of sites contain consid-

¹ PALET, ORENGO, FIZ in press; FIZ, PALET, ORENGO in press.

² GILLINGS 1998; FIZ, ORENGO 2008; ORENGO, EJARQUE, ALBIACH 2010.

³ BERGER, JUNG 1996; BERGER 2003.

⁴ PALET 2003.

⁵ PETERSON 1998b, p. 111.

erable deviations. This is often caused by the use of small scale maps which may lead to inaccurate placements instead of GPS measurements of the site location. It should not be forgotten that the introduction of GPS is a very recent development and site records can be full of outdated registers that were introduced when the most common type of cartographic source was the 1:25.000 and 1:50.000 topographic map series. Therefore, the unquestioned correlation between site locations obtained from institutional records to the archaeomorphological analysis needs to be discouraged since it can lead to faulty results.¹

Another way to test a centuriation proposal consists in measuring the orientation of the different structures excavated within the centuriated area and comparing them to the orientation of the grid axes, seeking significant coincidences. Elements with clear orientation such as roads, aqueducts, field boundaries or planned settlements can be employed.

BEYOND A PURELY ARCHAEO MORPHOLOGICAL IDENTIFICATION

The incorporation of written sources

Written documents have demonstrated their utility in regressive archaeomorphological analysis.² Documents referring to different forms of land management such as donations or sales become especially useful since they take good care of defining the land limits clearly. The limits can consist of landscape features such as roads, aqueducts or other identifiable landmarks. Other types of written sources which provide information are inheritance documents, foundation documents or cadastral documents. Although written sources only provide *post quem* dates, they should be sufficient to obtain a chronological frame where the traces documented in written records and their associated morphology can fit.

The incorporation of environmental sources

Environmental sources are essential in the identification of ancient morphologies, but they can also provide important data related to human-environment relationships. Disciplines such as palinology or sedimentology can offer important insights on the effects a *deductio* had on the landscape.³ They can also help in reconstructing ancient landscapes and delimiting those areas subjected to human action (FIG. 7). The combination of landscape-oriented disciplines with those analysing human deposits such as carpology or anthracology provides an appropriate frame to develop hypothesis on how humans managed the landscape. They are also a valuable counterpart to the general view on the landscape provided by palinology. An ample knowledge of palaeoenvironmental settings of the study area is basic to carry out satisfactory archaeomorphological analyses.⁴ Therefore, ignoring them could lead to erroneous restitutions. Examples of such analysis can be found in GONZÁLEZ VILLAESCUSA 2006 (fig. 3) with the restitution of traces at the littoral lagoon of La Albufera that used to be much larger in Roman times than it is now. Another example is the proposal of the Roman desiccation of a hy-

¹ An example can be found in ARRAYÁS 2005, pp. 368-386.

² PALET 1997.

³ PALET, RIERA 1994; BERGER, JUNG 1996; De DAPPER, VERMEULEN 2002; DALL'AGLIO, FRANCE-

SHELLI 2007; FRANCESCELLI 2009; PALET, RIERA 2009.

⁴ BERGER, JUNG 1996; FRANCESCELLI, MARABINI 2007.

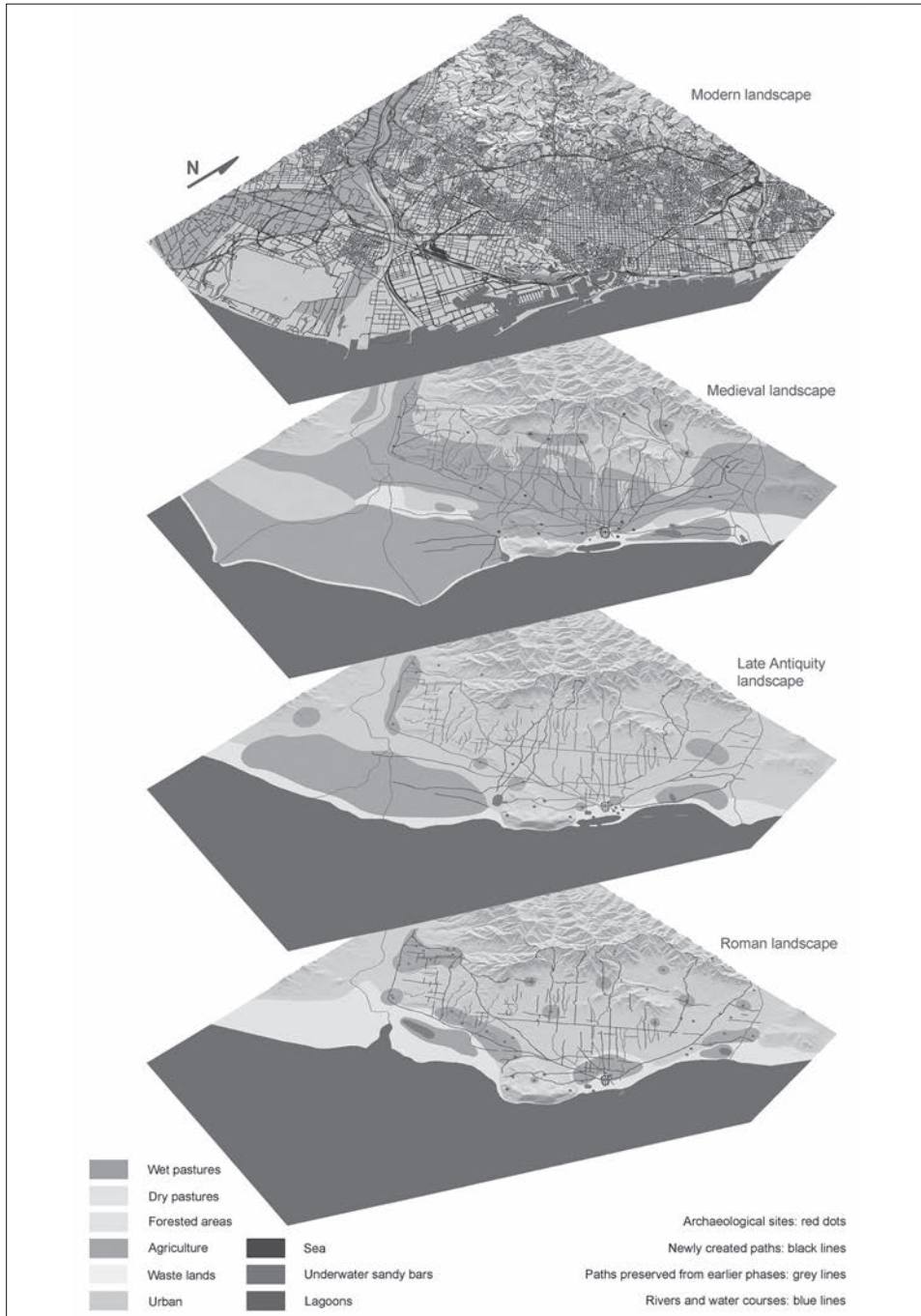


FIG. 7. Example from the *ager Barcinonensis* in which it can be appreciated how the combination of palaeoenvironmental data, archaeological data and archaeomorphological data can offer hypothesis on the diachronical configuration of landscapes.

pothetical wetland in the area occupied by the centuriation of *Ilici*.¹ Both the city and its territory are located on the alluvial fan of the Vinalopó River, a fact that renders impossible the existence of a wetland in the area. These study cases illustrate the difficulty to perform archaeomorphological analysis outside the framework of transdisciplinary landscape archaeology.

CONCLUSIONS

Although centuriation was only one form of Roman land division system, its thorough impact on the landscape and visibility in modern land arrangements make it the most commonly recognised expression of Roman landscapes. However, the accurate identification of centuriated field systems is a complex and difficult task which needs the concurrence of many disciplines and techniques in order to offer reliable results. Until recently many researchers have been working in isolation, employing questionable methodologies without offering proof of their hypotheses. During the last years there has been a growing interest in developing new landscape-based methodologies and approaches. Archaeomorphology has been integrated with other techniques, mainly palaeoenvironmental research, increasing the quality and analytical depth of these studies. This will, in turn, result in a renewal of a discipline which has been severely criticised during the last decades.

In this article some integrated methodological approaches have been briefly explored to offer an overview of how adopting a landscape archaeology approach can help in diachronic archaeomorphological analyses.

The study of centuriations needs to move forward by adopting landscape archaeology aims and methodologies. It is thus necessary to integrate transdisciplinary and diachronic approaches in order to produce reliable results and contextualise this research in a meaningful framework.

BIBLIOGRAPHY

- ARIÑO E., GURT J. M., PALET J. M. 2004, *El pasado presente. Arqueología de los paisajes en la Hispania romana*, Salamanca-Barcelona.
- ARRAYÁS I. 2005, *Morfología històrica del territori de Tarraco (ss. III-I a.C.)*, «Col·lecció Instrumenta», 19, Universidad de Barcelona, Barcelona.
- EL-BAZ F., ROBINSON C. A., AL-SAUD T. S. M. 2007, *Radar Images and Geoarchaeology of the Eastern Sahara*, in *Remote Sensing in Archaeology*, eds. J. Wiseman, F. El-Baz, New York, pp. 47-70.
- BERGER J.-F. 2003, *Les facteurs de l'érosion: méthodes d'analyse et conceptualisation des processus*, in *Archéologie et systèmes socio-environnementaux*, dirs. S. Van der Leeuw, F. Favory, J.-L. Fiches, «Collection de Recherches Archéologiques», 27, Paris, pp. 45-85.
- BERGER J.-F., JUNG C. 1996, *Fonction, évolution et «taphonomie» des parcellaires en moyenne vallée du Rhône. Un exemple d'approche intégrée en archéomorphologie et en géoarchéologie*, in *Les formes du paysage*, II, *Archéologie des parcellaires*, Actes du colloque (Orléans, mars 1996), ed. G. Chouquer, Paris, pp. 95-112.
- CHOUQUER G. (ed.) 1996-1997, *Les formes du paysage*, I-III, Paris.
- CHOUQUER G. 1997, *La place de l'analyse des systèmes spatiaux dans l'étude des paysages du passé*, in *Les formes du paysage*, III, *L'analyse des systèmes spatiaux*, ed. G. Chouquer, Paris, pp. 14-24.
- CHOUQUER G. 2000, *L'étude des paysages. Essais sur leurs formes et leur histoire*, Paris.
- CHOUQUER G. 2003a, *L'espace des sociétés antiques, entre projet et expérience*, «Études rurales», 167-168, pp. 69-92.

¹ MAYER, OLESTI 2001; GONZÁLEZ VILLAESCUSA 2008.

- CHOUQUER G. 2003b, *Crise et recomposition des objets: les enjeux de l'archéogéographie*, «Études rurales», 167-168, pp. 13-32.
- CHOUQUER G., CLAVEL-LÉVÊQUE M., FAVORY F., VALLAT J. P. 1987, *Structures agraires en Italie centro-méridionale. Cadastres et paysages ruraux*, Roma.
- CIFANI G., OPITZ R., STODDART S. 2007, Mapping the ager Faliscus road-system: the contribution of LiDAR survey, «JRA», 20 (1), pp. 165-176.
- CLAVEL-LÉVÊQUE M. 1983, *Cadastres et espace rural. Approches et réalités antiques*, Paris.
- CLAVEL-LÉVÊQUE M. 1993, *La cadastració en l'espai imperial. Memòria i raó*, «L'Avenç», 167, pp. 18-23.
- DECRAMER L. R. et alii 2006, *La grande carte de la colonie romaine d'Orange*, in *Autour des Libri coloniarum. Colonisation et colonies dans le monde romain*, eds. A. Gonzalez, J.-Y. Guillaumin, Besançon, pp. 93-114.
- DALL'AGLIO P. L., FRANCESCHELLI C. 2007, *Il paesaggio della pianura romagnola tra l'età antica e il primo medioevo*, in *Lo scorrere del paesaggio. Il trasformarsi della pianura romagnola dalla preistoria al '900*, dir. L. Varni, Faenza (Ravenna), pp. 9-48.
- DONOGHUE D. et alii 2006, *The use of remote sensing data for visualising and interpreting archaeological landscapes*, in *Recording, Modeling and Visualization of Cultural Heritage*, eds. E. Baltsavias, A. Gruen, L. Van Gool, M. Pateraki, London, pp. 317-326.
- DE DAPPER M., VERMEULEN F. 2002, *La geomorphologie au service de l'étude des paysages anciens. Une application en Anatolie*, in *Atlas Historique des Cadastres d'Europe*, dirs. M. Clavel-Lévêque, A. Orejas, Dossier 3T, Luxembourg.
- DE SILVA M., PIZIOLO G. 2001, *Setting up a «Human Calibrated» anisotropic cost surface for archaeological landscape investigation*, in *Computing archaeology for understanding the past*, Proceedings of the 28th International Conference on Computer Applications and Quantitative Methods in Archaeology (CAA) (Ljubljana, april 2000), eds. Z. Stančić, T. Veljanovski, BAR International Series 931, Oxford.
- FAVORY F. 1996, *Morphologie agraire isocline avec une limitation romaine. Acquis et problèmes*, in *Les formes du paysage*, II, *Archéologie des parcellaires*, Actes du colloque (Orléans, mars 1996), ed. G. Chouquer, Paris, pp. 193-200.
- FAVORY F. 1997, *Retour critique sur les centuriations du Languedoc oriental, leur existence et leur datation*, in *Les formes du paysage*, III, *L'analyse des systèmes spatiaux*, ed. G. Chouquer, Paris, pp. 96-126.
- FICHES J. L. 1996, *Les cadastres romains en Gaule du Sud*, «JRA», 9, pp. 447-453.
- FIZ I., ORENGO H. A. 2008, *Simulating communication routes in Mediterranean alluvial plains*, in *Layers of Perception*, Proceedings of the 35th International Conference on Computer Applications and Quantitative Methods in Archaeology (CAA) (Berlin, April 2nd-6th 2007), eds. A. Posluschny, K. Lambers, I. Herzog, «Kolloquien zur Vor- und Frühgeschichte», 10, Bonn, pp. 316-321.
- FIZ I., PALET J. M., ORENGO H. A. in press, *The making of the Roman landscape: Conceptual investigations into the genesis of centuriated field systems*, in *On the Road to Reconstructing the Past*, Proceedings of the 36th International Conference on Computer Applications and Quantitative Methods in Archaeology (CAA).
- FRANCESCHELLI C. 2009, *Dynamiques de transmission de la morphologie agraire: 'pérennisation' et 'effacement' de la centuriation romaine dans la plaine sud du Pô*, «Agri centuriati», 5, pp. 77-105.
- FRANCESCHELLI C., MARABINI S. 2007, *Lettura di un territorio sepolto. La pianura lughese in età romana*, «Studi e Scavi», Dipartimento di Archeologia dell'Università di Bologna, Bologna.
- GILLINS M. 1998, *Embracing Uncertainty and Challenging Dualism in the GIS-Based Study of a Palaeo-Flood Plain*, «European Journal of Archaeology», 1 (1), pp. 117-144.
- GONZÁLEZ VILLAESCUSA R. 2006, *El paisaje y la unidad de producción*, in *La villa de Cornelius*, coords. R. Albiach, J. L. De Madaria, Valencia, pp. 28-36.
- GONZÁLEZ VILLAESCUSA R. 2007, *La Huerta cuando no lo era. La configuración histórica del territorio de Valentia*, in *El patrimonio hidráulico del Bajo Turia: L'Horta de València*, dir. J. Hermosilla, Valencia, pp. 45-59.

- GONZÁLEZ VILLAESCUSA R. 2008, *Ce que la morphologie peut apporter à la connaissance de la centuriation d'Ilici (Elche, Espagne)*, «Agri centuriati», 4, pp. 29-42.
- LEVEAU PH. 2000, *Le paysage aux époques historiques. Un document archéologique*, «Annales. Histoire, Sciences Sociales», 3, pp. 555-582.
- LEVEAU PH. 2006, *L'archéologie du paysage et l'antiquité classique*, «Agri centuriati», 2, pp. 9-24.
- MAYER M., OLESTI O. 2001, *La sortitio de Ilici. Del documento epigráfico al paisaje histórico*, «DHA», 27, 1, pp. 109-130.
- MIRÓ C., ORENGO H. A. 2010, *El cicle de l'aigua a Barcino. Una reflexió entorn a les noves dades arqueològiques*, «Quarhis», 6, pp. 108-133.
- OLESTI O. 1995, *El territori del Maresme en època republicana (s. III-I a.C.)*. Estudi d'Arqueomorfologia i Història, Mataró.
- ORENGO H. A., PALET J. M. 2008, *Multispectral satellite imagery and the detection of subsurface Roman field systems*, in *On the Road to Reconstructing the Past*, Proceedings of the 36th International Conference on Computer Applications and Quantitative Methods in Archaeology (CAA), (Budapest, 2008), eds. E. Jerem, F. Redo, V. Szeverényi, pp. 266-267.
- ORENGO H. A., EJARQUE A., ALBIACH R. 2010, *Remote Sensing and GIS applied to the study of an Iberian Iron Age oppidum's hinterland: La Carència project (Valencia, Spain)*, in *Making History Interactive*, Proceedings of the 37th International Conference on Computer Applications and Quantitative Methods in Archaeology (CAA), ed. B. Frischer, Williamsburg - Virginia (United States). [http://www.caa2009.org/articles/Orengo_Contribution303_c%20\(1\).pdf](http://www.caa2009.org/articles/Orengo_Contribution303_c%20(1).pdf)
- PALET J. M. 1997, *Estudi territorial del Pla de Barcelona. Estructuració i evolució del territori entre l'època iberoromana i l'altmedieval. Segles II-I a.C./X-XI d.C.*, «Estudis i Memòries d'Arqueologia de Barcelona», 1, Barcelona.
- PALET J. M. 2003, *L'organització del paisatge agrari al Penedès i les centuriacions del territori de Tarraco: estudi arqueomorfològic*, in *Territoris antics a la Mediterrània i a la Cossetània oriental. Simposi Internacional d'Arqueologia del Baix Penedès*, eds. J. Guitart, J. M. Palet, M. Prevosti, Barcelona, pp. 211-229.
- PALET J. M., ORENGO H. A., FIZ J. I. in press, *Análisis planimétrico digital de la red viaria y del parcelario en el ager Tarraconensis: formas del paisaje y articulación del territorio*, «Anejos del Archivo Español de Arqueología».
- PALET J. M., RIERA S. 1994, *Landscape dynamics from Iberian-Roman (2nd-1st centuries BC) to early medieval times (12th century) in the Montjuïc-El Port sector (Plain of Barcelona, NE Iberian Peninsula)*, «Archeologia Medievale», XXI, pp. 517-540.
- PALET J. M., RIERA S. 2009, *Activitats agràries i modelació antròpica en el territori de la colònia Barcino: aproximació des de l'arqueomorfologia i la palinologia*, in *Marques i terrisseries d'àmfores en el Pla de Barcelona*, dirs. J. Guitart, C. Carreras, Barcelona, pp. 131-140.
- PARCAK S. H. 2009, *Satellite Remote Sensing for Archaeology*, Oxon.
- PETERSON J. W. M. 1993, *Computer-aided investigation of ancient cadastres*, PhD Thesis, University of East Anglia.
- PETERSON J. W. M. (ed.) 1998a, *The use of Geographic Information Systems in the study of ancient landscapes and features related to ancient land use*, Luxembourg.
- PETERSON J. W. M. 1998b, *Mathematical detection of patterns in ancient landscape*, in *The use of Geographic Information Systems in the study of ancient landscapes and features related to ancient land use*, ed. J. W. M. Peterson, Luxembourg, pp. 111-113.
- PRIETO A. 2002, *Espacio social y organización territorial de la Hispania romana*, «Studia Historica, Historia Antigua», 20, pp. 139-170.
- PRIETO A. 2008, *La organización territorial del nordeste de la Hispania Citerior*, in *Iberia e Italia. Modelos romanos de integración territorial*, eds. J. Uroz, J. M. Noguera, F. Coarelli, Murcia, pp. 25-42.
- ROBERTS B. K. 1987, *Landscape Archaeology*, in *Landscape and Culture. Geographical and Archaeological Perspectives*, ed. J. M. Wagstaff, Oxford, pp. 77-95.
- ROMANO D. G. 1998, *GIS Based Analysis of Ancient Land Division in the Corinthia, Greece*, in *The use of Geographic Information Systems in the study of ancient landscapes and features related to ancient land use*, ed. J. W. M. Peterson, Luxembourg, pp. 21-30.

- ROMANO D. G., TOLBA O. 1996, *Remote sensing and GIS in the study of Roman centuriation in the Corinthia, Greece*, in *CAA95: Interfacing the past, Computer applications and quantitative methods in archaeology*, eds. H. Kamermans, K. Fennema, Leiden, pp. 457-463.
- VAN LEUSEN M. 2002, *Pattern to process: Methodological investigations into the formation and interpretation of spatial patterns in archaeological landscapes*, unpublished PhD Thesis, University of Leiden.
- VION E. 1989, *L'analyse archéologique des réseaux routiers: une rupture méthodologique, des réponses nouvelles*, «Paysages découverts», 1, pp. 67-99.

COMPOSTO IN CARATTERE DANTE MONOTYPE DALLA
FABRIZIO SERRA EDITORE, PISA · ROMA.
STAMPATO E RILEGATO NELLA
TIPOGRAFIA DI AGNANO, AGNANO PISANO (PISA).

★

Giugno 2010

(CZ 2 · FG 21)

